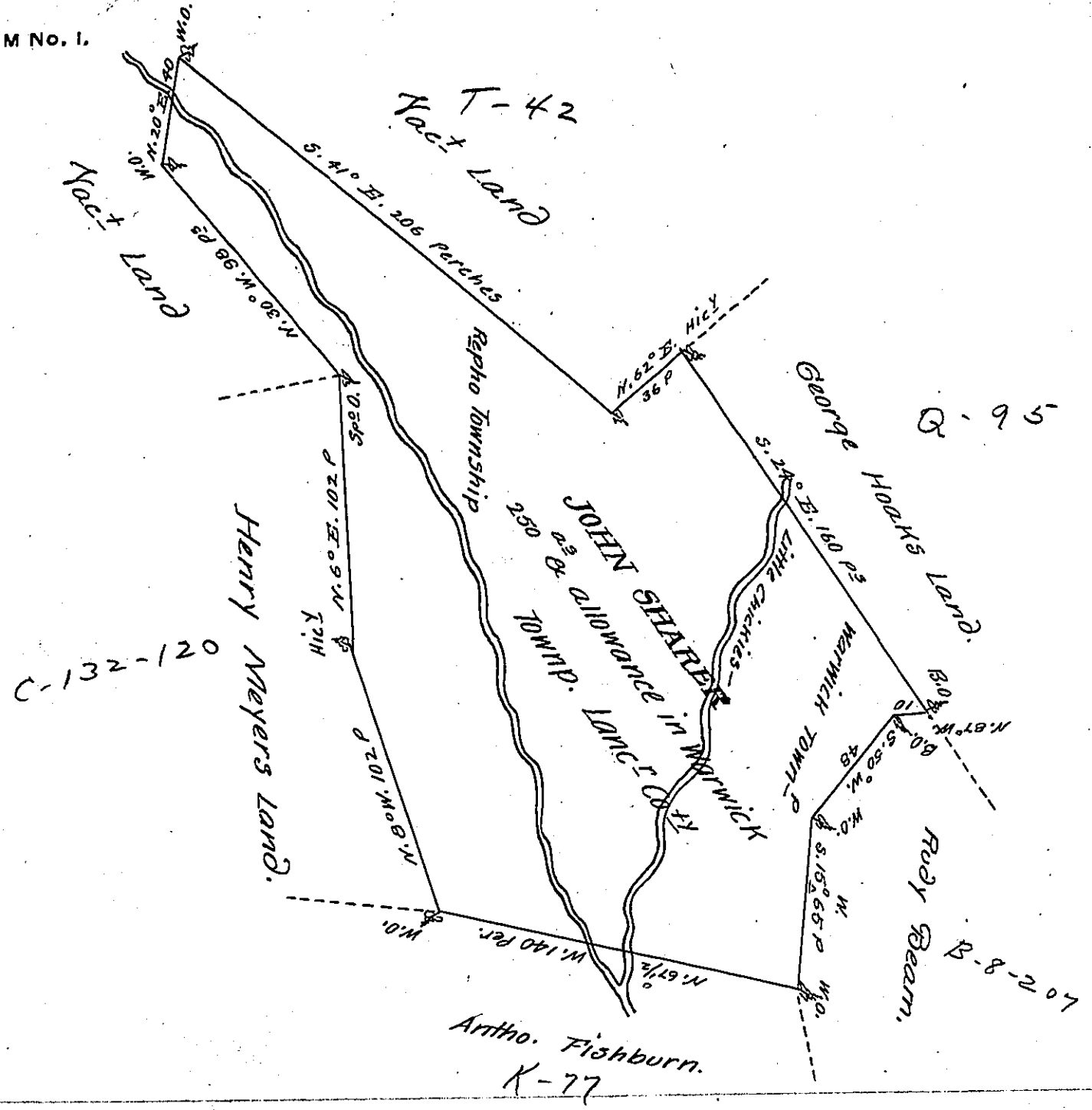


FORM No. 1.



A Draught of John Sharer's land situate in Warwick & Repho Townships  
 in the County of Lancaster containing two hundred & fifty acres & the allowan-  
 ce of six acres per Cent for Roads & Highways by virtue of a Warr<sup>t</sup> from  
 ye Hon<sup>ble</sup> Prop<sup>rs</sup> bearing date the ~~seventeenth~~ <sup>Twenty seventh</sup> day of ~~February~~ <sup>April</sup> 1750  
 surveyed ye 17<sup>th</sup> October 1749.

P. Tho: Cookson D.S.

To Mr Nicholas Scull.

Surreyor Gen<sup>l</sup>

Note the Tract was survey'd by Mr Blunston the notes lost & the lines  
 run anew by me so that I not having the Warr<sup>t</sup> cannot insert ye date

T.C. -

IN TESTIMONY that the above is a copy of the original remaining on file in  
 the Department of Internal Affairs of Pennsylvania, made  
 conformably to an Act of Assembly approved the 16th day of  
 February, 1833, I have hereunto set my Hand and caused  
 the Seal of said Department to be affixed at Harrisburg,  
 this eighteenth day of October 1906.

*Loacn Brown*  
 Secretary of Internal Affairs.